



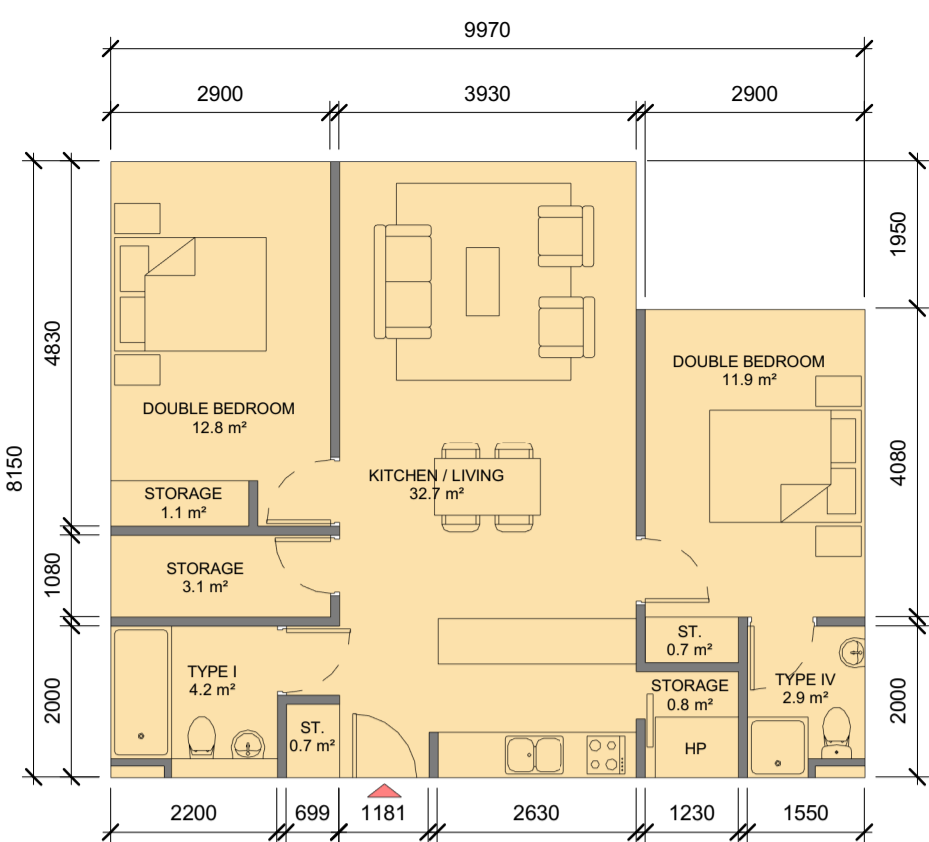
**74.8 m<sup>2</sup>**

F-2B-I	
Name	Area
DOUBLE BEDROOM	12.6 m <sup>2</sup>
DOUBLE BEDROOM	13.0 m <sup>2</sup>
KITCHEN / LIVING	31.5 m <sup>2</sup>
ST.	0.5 m <sup>2</sup>
ST.	1.4 m <sup>2</sup>
STORAGE	2.3 m <sup>2</sup>
STORAGE	0.9 m <sup>2</sup>
STORAGE	1.0 m <sup>2</sup>
TYPE II	3.9 m <sup>2</sup>
TYPE VI	2.4 m <sup>2</sup>

**F-2B-I - SPACE REQUIREMENTS**

Apartment Area	Required Apartment Area	Required Area Met	Kitchen - Living Area	Required Kitchen - Living Area	Required Area Met	Total Bedroom Area	Required Total Bedroom Area	Required Area Met	Total Storage Area	Required Total Storage Area	Required Area Met
74.8 m <sup>2</sup>	73.0 m <sup>2</sup>	Yes	31.5 m <sup>2</sup>	30.0 m <sup>2</sup>	Yes	25.6 m <sup>2</sup>	24.4 m <sup>2</sup>	Yes	6.1 m <sup>2</sup>	6.0 m <sup>2</sup>	Yes

1 F-2B-i  
1:100



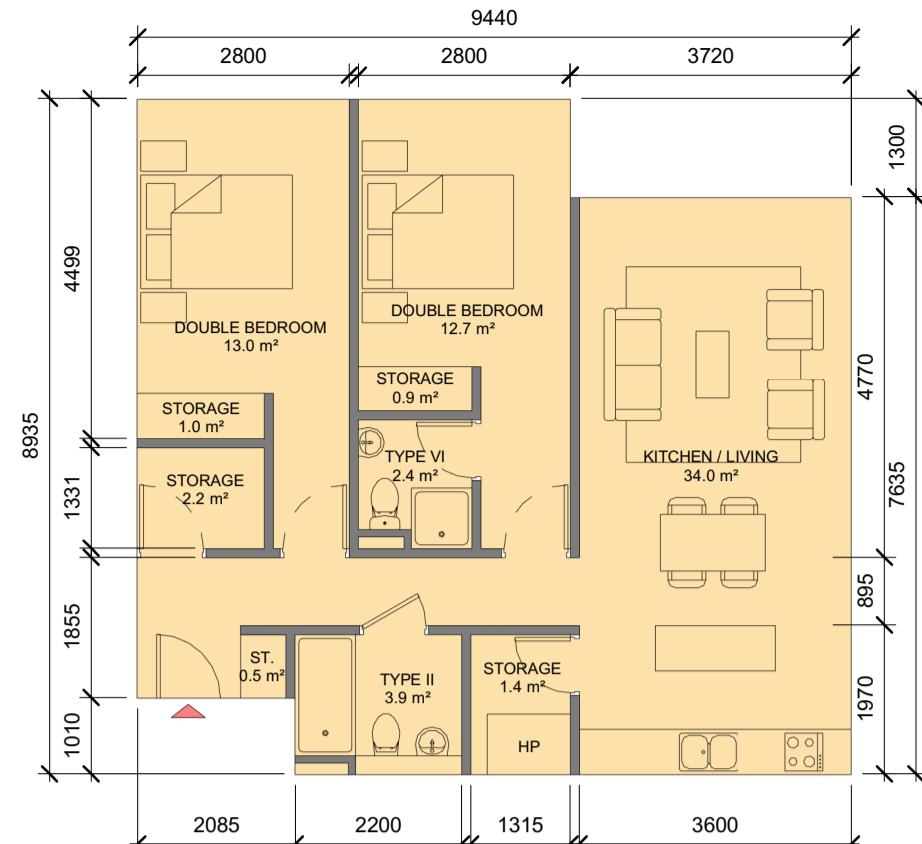
**75.4 m<sup>2</sup>**

F-2B-II	
Name	Area
DOUBLE BEDROOM	11.9 m <sup>2</sup>
DOUBLE BEDROOM	12.8 m <sup>2</sup>
KITCHEN / LIVING	32.7 m <sup>2</sup>
ST.	0.7 m <sup>2</sup>
ST.	0.7 m <sup>2</sup>
STORAGE	0.8 m <sup>2</sup>
STORAGE	3.1 m <sup>2</sup>
STORAGE	1.1 m <sup>2</sup>
TYPE I	4.2 m <sup>2</sup>
TYPE IV	2.9 m <sup>2</sup>

**F-2B-II - SPACE REQUIREMENTS**

Apartment Area	Required Apartment Area	Required Area Met	Kitchen - Living Area	Required Kitchen - Living Area	Required Area Met	Total Bedroom Area	Required Total Bedroom Area	Required Area Met	Total Storage Area	Required Total Storage Area	Required Area Met
75.4 m <sup>2</sup>	73.0 m <sup>2</sup>	Yes	32.7 m <sup>2</sup>	30.0 m <sup>2</sup>	Yes	24.7 m <sup>2</sup>	24.4 m <sup>2</sup>	Yes	6.4 m <sup>2</sup>	6.0 m <sup>2</sup>	Yes

2 F-2B-ii  
1:100



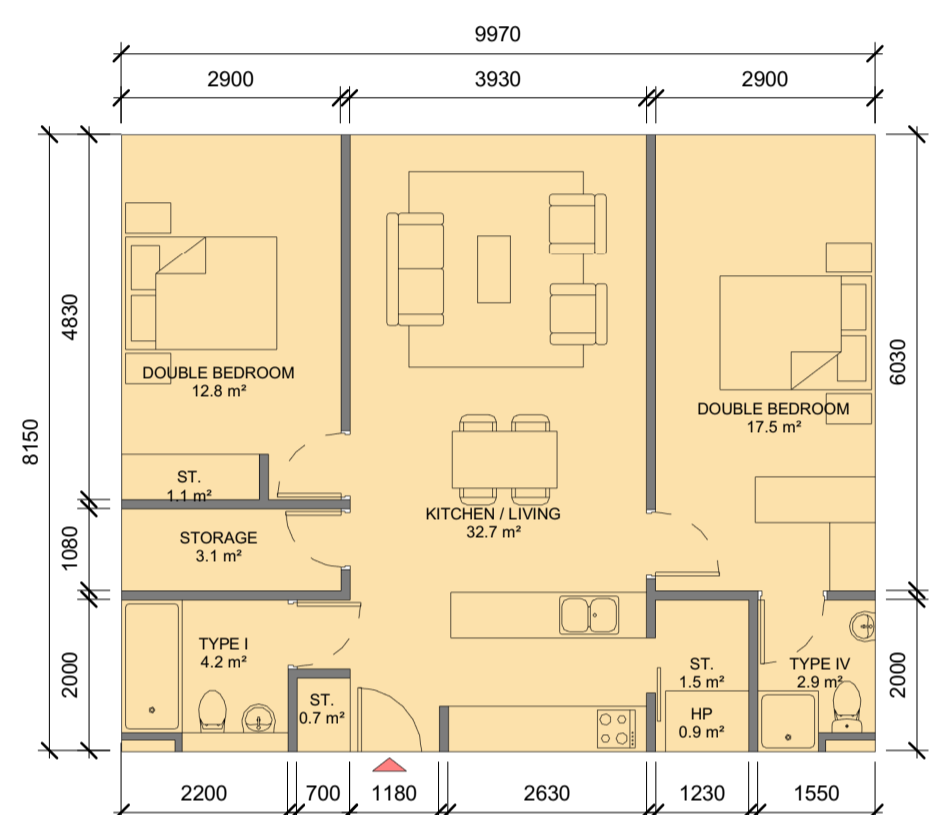
**77.4 m<sup>2</sup>**

F-2B-IV	
Name	Area
DOUBLE BEDROOM	12.7 m <sup>2</sup>
DOUBLE BEDROOM	13.0 m <sup>2</sup>
KITCHEN / LIVING	34.0 m <sup>2</sup>
ST.	0.5 m <sup>2</sup>
STORAGE	2.2 m <sup>2</sup>
STORAGE	1.4 m <sup>2</sup>
STORAGE	0.9 m <sup>2</sup>
STORAGE	1.0 m <sup>2</sup>
TYPE II	3.9 m <sup>2</sup>
TYPE VI	2.4 m <sup>2</sup>

**F-2B-IV - SPACE REQUIREMENTS**

Apartment Area	Required Apartment Area	Required Area Met	Kitchen - Living Area	Required Kitchen - Living Area	Required Area Met	Total Bedroom Area	Required Total Bedroom Area	Required Area Met	Total Storage Area	Required Total Storage Area	Required Area Met
77.4 m <sup>2</sup>	73.0 m <sup>2</sup>	Yes	34.0 m <sup>2</sup>	30.0 m <sup>2</sup>	Yes	25.7 m <sup>2</sup>	24.4 m <sup>2</sup>	Yes	6.0 m <sup>2</sup>	6.0 m <sup>2</sup>	Yes

4 F-2B-iv  
1:100



**81.3 m<sup>2</sup>**

F-2B-V	
wt	Area
DOUBLE BEDROOM	17.5 m <sup>2</sup>
DOUBLE BEDROOM	12.8 m <sup>2</sup>
KITCHEN / LIVING	32.7 m <sup>2</sup>
ST.	1.5 m <sup>2</sup>
ST.	0.7 m <sup>2</sup>
ST.	1.1 m <sup>2</sup>
STORAGE	3.1 m <sup>2</sup>
TYPE I	4.2 m <sup>2</sup>
TYPE IV	2.9 m <sup>2</sup>

**F-2B-V - SPACE REQUIREMENTS**

Apartment Area	Required Apartment Area	Required Area Met	Kitchen - Living Area	Required Kitchen - Living Area	Required Area Met	Total Bedroom Area	Required Total Bedroom Area	Required Area Met	Total Storage Area	Required Total Storage Area	Required Area Met
81.3 m <sup>2</sup>	73.0 m <sup>2</sup>	Yes	32.7 m <sup>2</sup>	30.0 m <sup>2</sup>	Yes	30.3 m <sup>2</sup>	24.4 m <sup>2</sup>	Yes	6.4 m <sup>2</sup>	6.0 m <sup>2</sup>	Yes

5 F-2B-v  
1:100



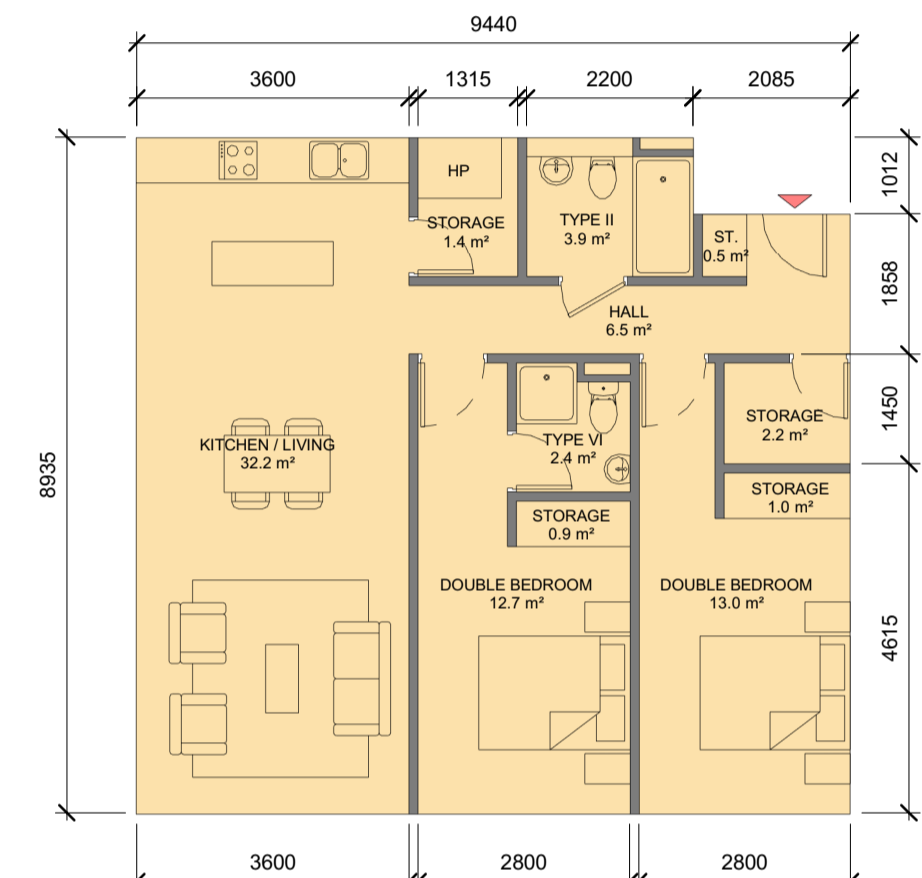
**74.8 m<sup>2</sup>**

F-2B-VII	
Name	Area
DOUBLE BEDROOM	12.9 m <sup>2</sup>
DOUBLE BEDROOM	13.0 m <sup>2</sup>
KITCHEN / LIVING	31.5 m <sup>2</sup>
ST.	0.5 m <sup>2</sup>
STORAGE	2.2 m <sup>2</sup>
STORAGE	1.4 m <sup>2</sup>
STORAGE	1.0 m <sup>2</sup>
STORAGE	0.9 m <sup>2</sup>
TYPE I	3.9 m <sup>2</sup>
TYPE VI	2.4 m <sup>2</sup>

**F-2B-VII - SPACE REQUIREMENTS**

Apartment Area	Required Apartment Area	Required Area Met	Kitchen - Living Area	Required Kitchen - Living Area	Required Area Met	Total Bedroom Area	Required Total Bedroom Area	Required Area Met	Total Storage Area	Required Total Storage Area	Required Area Met
74.8 m <sup>2</sup>	73.0 m <sup>2</sup>	Yes	31.5 m <sup>2</sup>	30.0 m <sup>2</sup>	Yes	25.9 m <sup>2</sup>	24.4 m <sup>2</sup>	Yes	6.0 m <sup>2</sup>	6.0 m <sup>2</sup>	Yes

3 F-2B-vii  
1:100



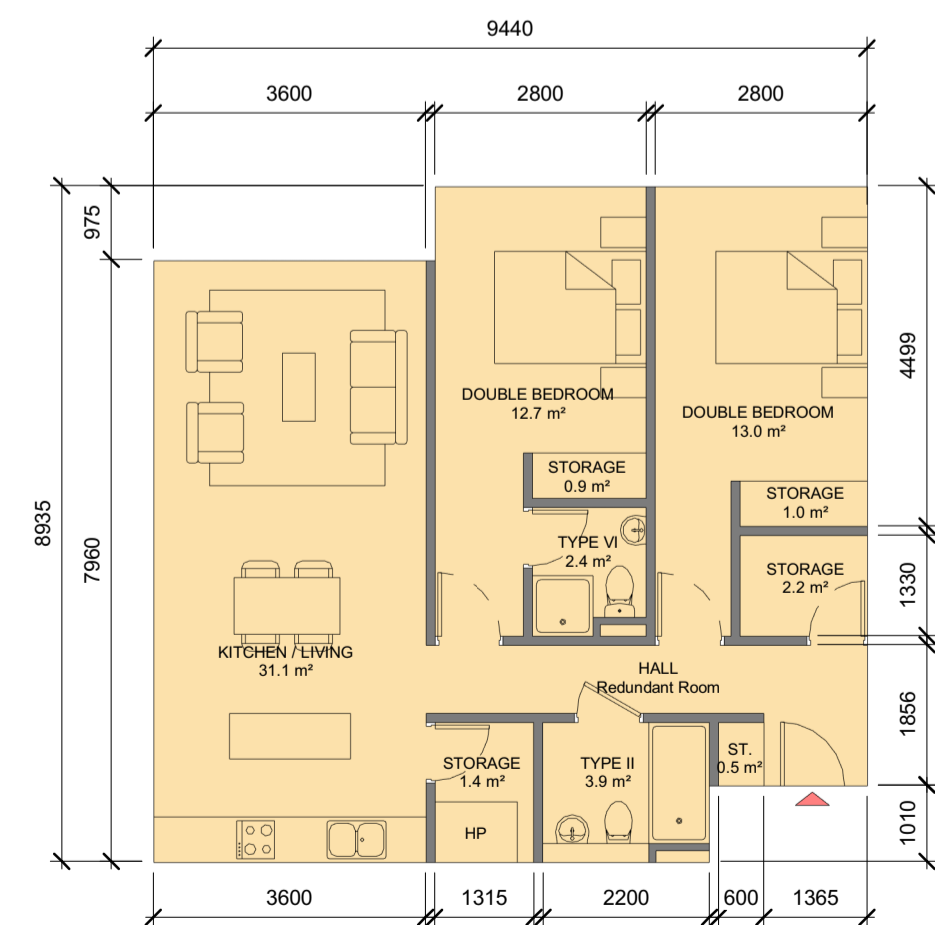
**82.2 m<sup>2</sup>**

F-2B-VIII	
Name	Area
DOUBLE BEDROOM	12.7 m <sup>2</sup>
DOUBLE BEDROOM	13.0 m <sup>2</sup>
HALL	6.5 m <sup>2</sup>
KITCHEN / LIVING	32.2 m <sup>2</sup>
ST.	0.5 m <sup>2</sup>
STORAGE	1.4 m <sup>2</sup>
STORAGE	2.2 m <sup>2</sup>
STORAGE	0.9 m <sup>2</sup>
STORAGE	1.0 m <sup>2</sup>
TYPE II	3.9 m <sup>2</sup>
TYPE VI	2.4 m <sup>2</sup>

**F-2B-VIII - SPACE REQUIREMENTS**

Apartment Area	Required Apartment Area	Required Area Met	Kitchen - Living Area	Required Kitchen - Living Area	Required Area Met	Total Bedroom Area	Required Total Bedroom Area	Required Area Met	Total Storage Area	Required Total Storage Area	Required Area Met
82.2 m <sup>2</sup>	73.0 m <sup>2</sup>	Yes	32.2 m <sup>2</sup>	30.0 m <sup>2</sup>	Yes	25.7 m <sup>2</sup>	24.4 m <sup>2</sup>	Yes	6.0 m <sup>2</sup>	6.0 m <sup>2</sup>	Yes

6 F-2B-viii  
1:100



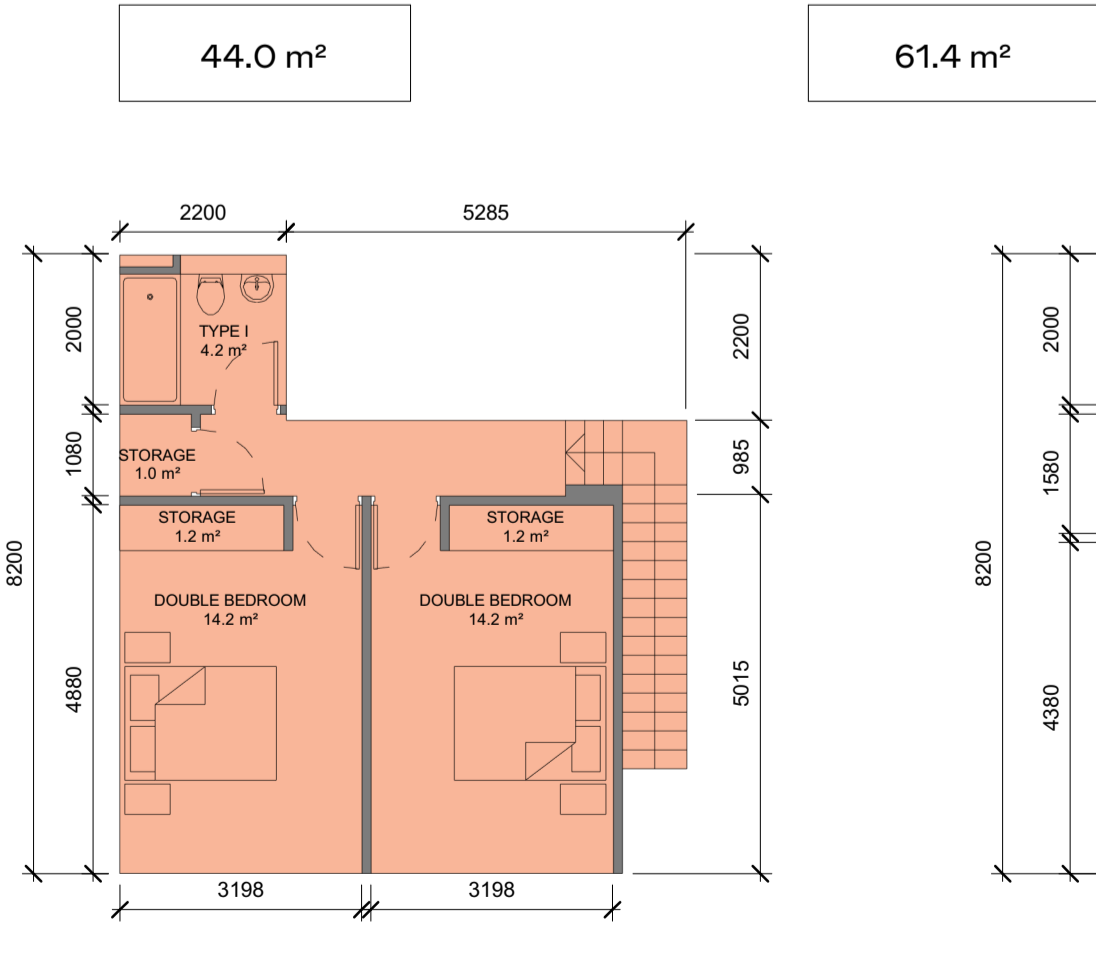
**78.6 m<sup>2</sup>**

F-2B-IX	
Name	Area
DOUBLE BEDROOM	12.7 m <sup>2</sup>
DOUBLE BEDROOM	13.0 m <sup>2</sup>
KITCHEN / LIVING	31.1 m <sup>2</sup>
ST.	0.5 m <sup>2</sup>
STORAGE	1.4 m <sup>2</sup>
STORAGE	2.2 m <sup>2</sup>
STORAGE	0.9 m <sup>2</sup>
STORAGE	1.0 m <sup>2</sup>
TYPE II	3.9 m <sup>2</sup>
TYPE VI	2.4 m <sup>2</sup>

**F-2B-IX - SPACE REQUIREMENTS**

Apartment Area	Required Apartment Area	Required Area Met	Kitchen - Living Area	Required Kitchen - Living Area	Required Area Met	Total Bedroom Area	Required Total Bedroom Area	Required Area Met	Total Storage Area	Required Total Storage Area	Required Area Met
77.4 m <sup>2</sup>	73.0 m <sup>2</sup>	Yes	31.1 m <sup>2</sup>	30.0 m <sup>2</sup>	Yes	25.8 m <sup>2</sup>	24.4 m <sup>2</sup>	Yes	6.0 m <sup>2</sup>	6.0 m <sup>2</sup>	Yes

7 F-2B-ix  
1:100



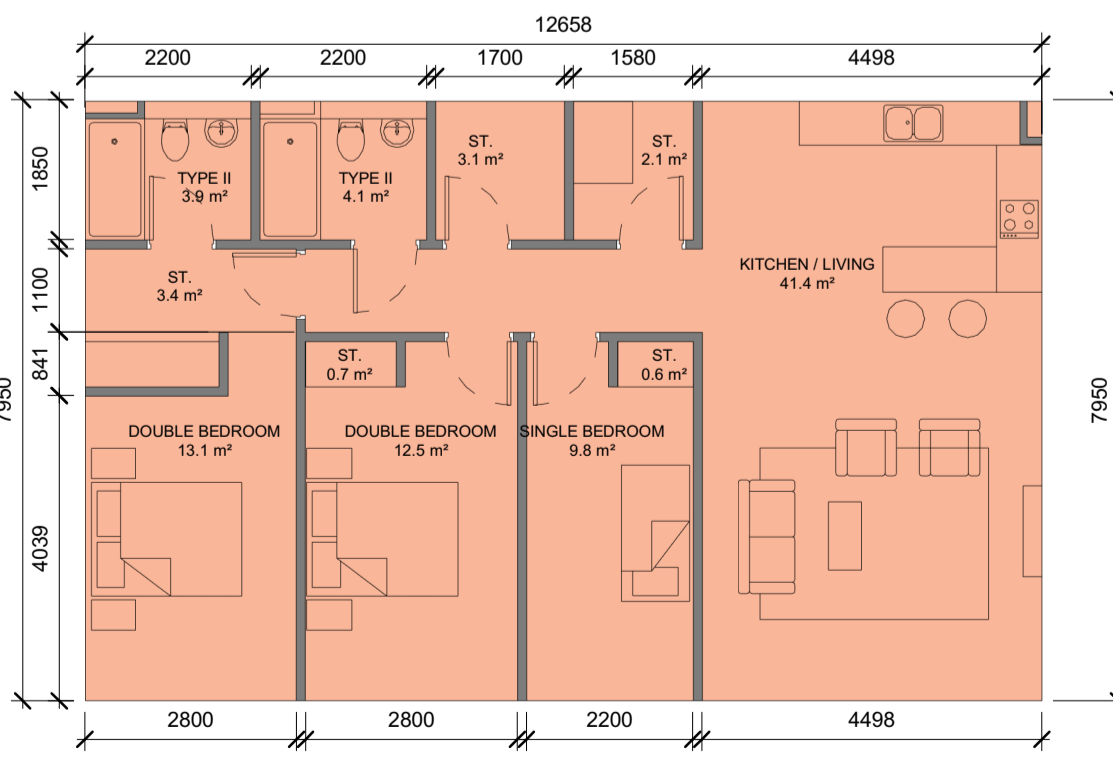
**44.0 m<sup>2</sup>**

F-3B-DX	
Name	Area
DOUBLE BEDROOM	14.2 m <sup>2</sup>
DOUBLE BEDROOM	14.2 m <sup>2</sup>
KITCHEN / LIVING	34.4 m <sup>2</sup>
LIVING	5.0 m <sup>2</sup>
STORAGE	1.0 m <sup>2</sup>
STORAGE	1.3 m <sup>2</sup>
STORAGE	1.2 m <sup>2</sup>
STORAGE	1.2 m <sup>2</sup>
TYPE I	4.2 m <sup>2</sup>
TYPE I	4.2 m <sup>2</sup>

**F-3B-DX - SPACE REQUIREMENTS**

Apartment Area	Required Apartment Area	Required Area Met	Kitchen - Living Area	Required Kitchen - Living Area	Required Area Met	Total Bedroom Area	Required Total Bedroom Area	Required Area Met	Total Storage Area	Required Total Storage Area	Required Area Met
105.4 m <sup>2</sup>	90.0 m <sup>2</sup>	Yes	34.4 m <sup>2</sup>	34.0 m <sup>2</sup>	Yes	40.2 m <sup>2</sup>	31.5 m <sup>2</sup>	Yes	9.1 m <sup>2</sup>	9.0 m <sup>2</sup>	Yes

8 F-3B-DX-i  
1:100



**100.6 m<sup>2</sup>**

F-3B-I	
Name	Area
DOUBLE BEDROOM	13.1 m <sup>2</sup>
DOUBLE BEDROOM	12.5 m <sup>2</sup>
KITCHEN / LIVING	41.4 m <sup>2</sup>
SINGLE BEDROOM	9.8 m <sup>2</sup>
ST.	3.4 m <sup>2</sup>
ST.	0.7 m <sup>2</sup>
ST.	0.6 m <sup>2</sup>
ST.	3.1 m <sup>2</sup>
ST.	2.1 m <sup>2</sup>
TYPE II	3.9 m <sup>2</sup>
TYPE II	4.1 m <sup>2</sup>

**F-3B-I - SPACE REQUIREMENTS**

Apartment Area	Required Apartment Area	Required Area Met	Kitchen - Living Area	Required Kitchen - Living Area	Required Area Met	Total Bedroom Area	Required Total Bedroom Area	Required Area Met	Total Storage Area	Required Total Storage Area	Required Area Met
100.6 m <sup>2</sup>	90.0 m <sup>2</sup>	Yes	41.4 m <sup>2</sup>	38.0 m <sup>2</sup>	Yes	35.4 m <sup>2</sup>	32.4 m <sup>2</sup>	Yes	9.9 m <sup>2</sup>	9.0 m <sup>2</sup>	Yes

9 F-3B-i  
1:100

ALL DIMENSIONS TO BE CHECKED ON SITE  
NO DIMENSIONS TO BE SCALED FROM THIS DRAWING  
DRAWING IS TO BE READ IN CONJUNCTION WITH RELEVANT CONSULTANTS DRAWINGS

NOTE:  
This drawing only shows internal floor space, balconies are shown on general arrangement plans and areas depicted on HGA

REV	DATE	DESCRIPTION	CHK	DRN
A2	15.11.2019	ISSUED FOR PLANNING APPROVAL	RJ	HIL
A1	18.07.2019	ISSUED FOR ABP PRE-APPLICATION	RI	DM

STATUS CODE DESCRIPTION  
**ISSUED FOR PLANNING APPROVAL**

CLIENT  
SANDYFORD GP Ltd.

PROJECT  
SANDYFORD CENTRAL

DRAWING  
PROPOSED APARTMENTS BLOCK F

PROJECT NUMBER  
950572

DATE  
18/07/2019

SCALE@ A1:  
1: 100

DRAWN/CHECKED:  
SR/ SR

REVISION  
A2 SFC-HJL-XX-ZR-DA-8105

STATUS CODE:  
A1

**Henry J Lyons**

Architecture + Interiors  
henryjlyons.com

+353 1 889 3333  
info@henryjlyons.com

51-54 Pearse Street  
Dublin D02 K666